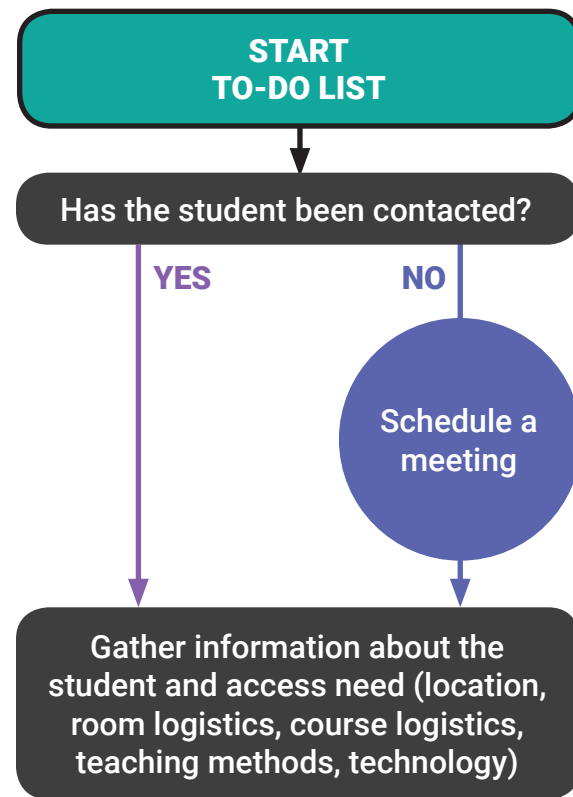


# Providing Remote Access Services

Use this tool to guide you through the process of providing remote access services. Answer each question with a "YES" (left) or a "NO" (right). At each answer point, write your responses, ideas, action steps, or other notes on a to-do list. Once complete, you should have a comprehensive plan for implementing services. If at any point your answer is unknown, determine whom to ask and note that on your to-do list.

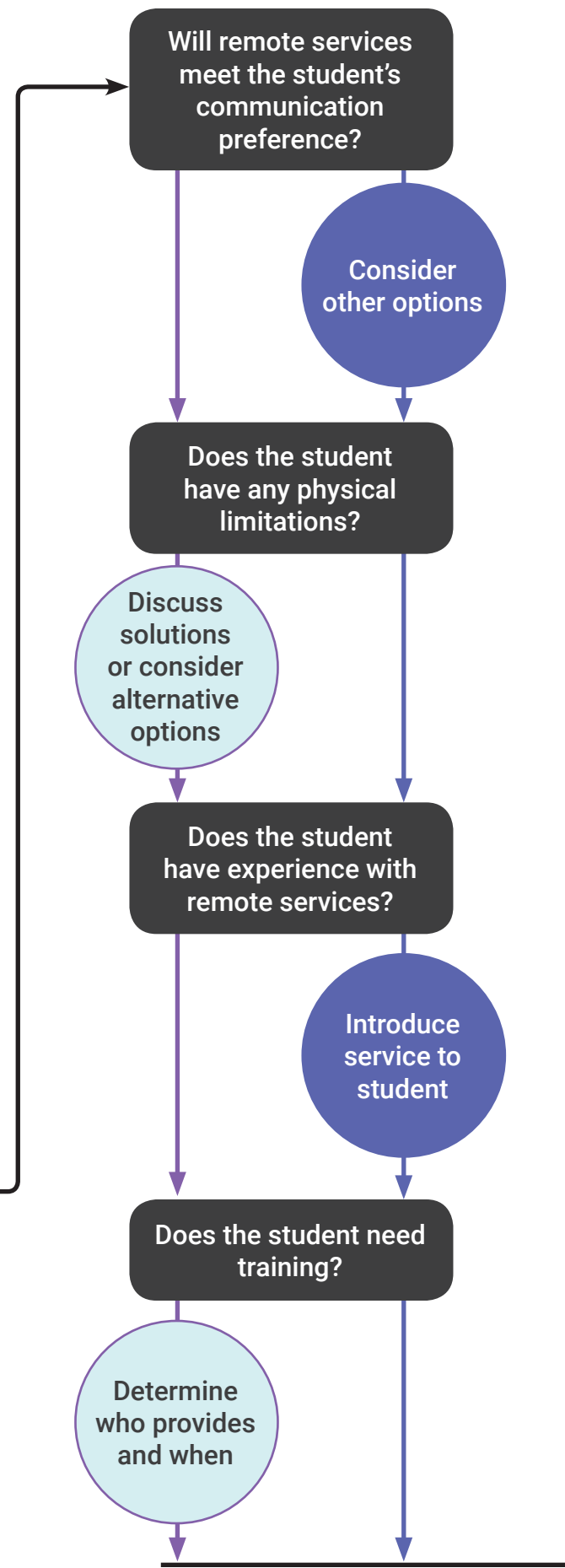


This document was developed under a grant from the U.S. Department of Education, OSEP #HD326D160001. However, the contents do not necessarily represent the policy of the U.S. Department of Education, and you should not assume endorsement by the federal government.

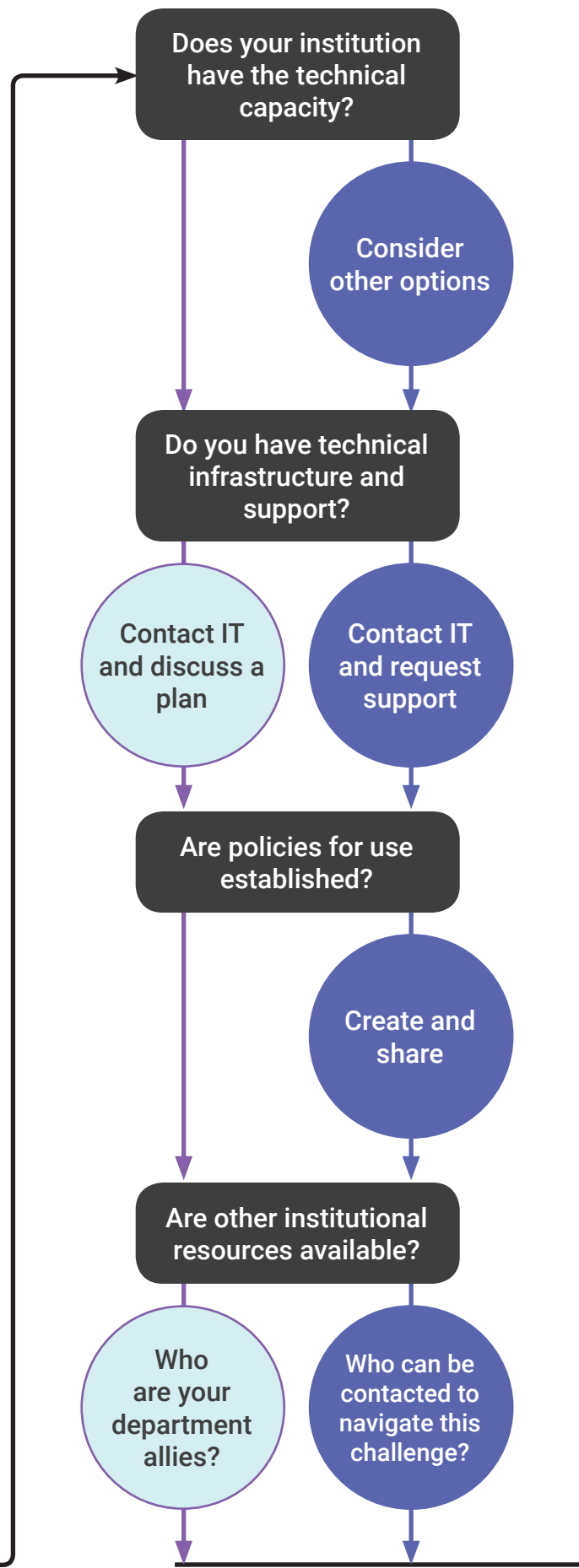


the policy of the U.S. Department of Education, and you should not assume endorsement by the federal government.

## STUDENT FACTORS



## INSTITUTIONAL FACTORS



## COURSE FACTORS

